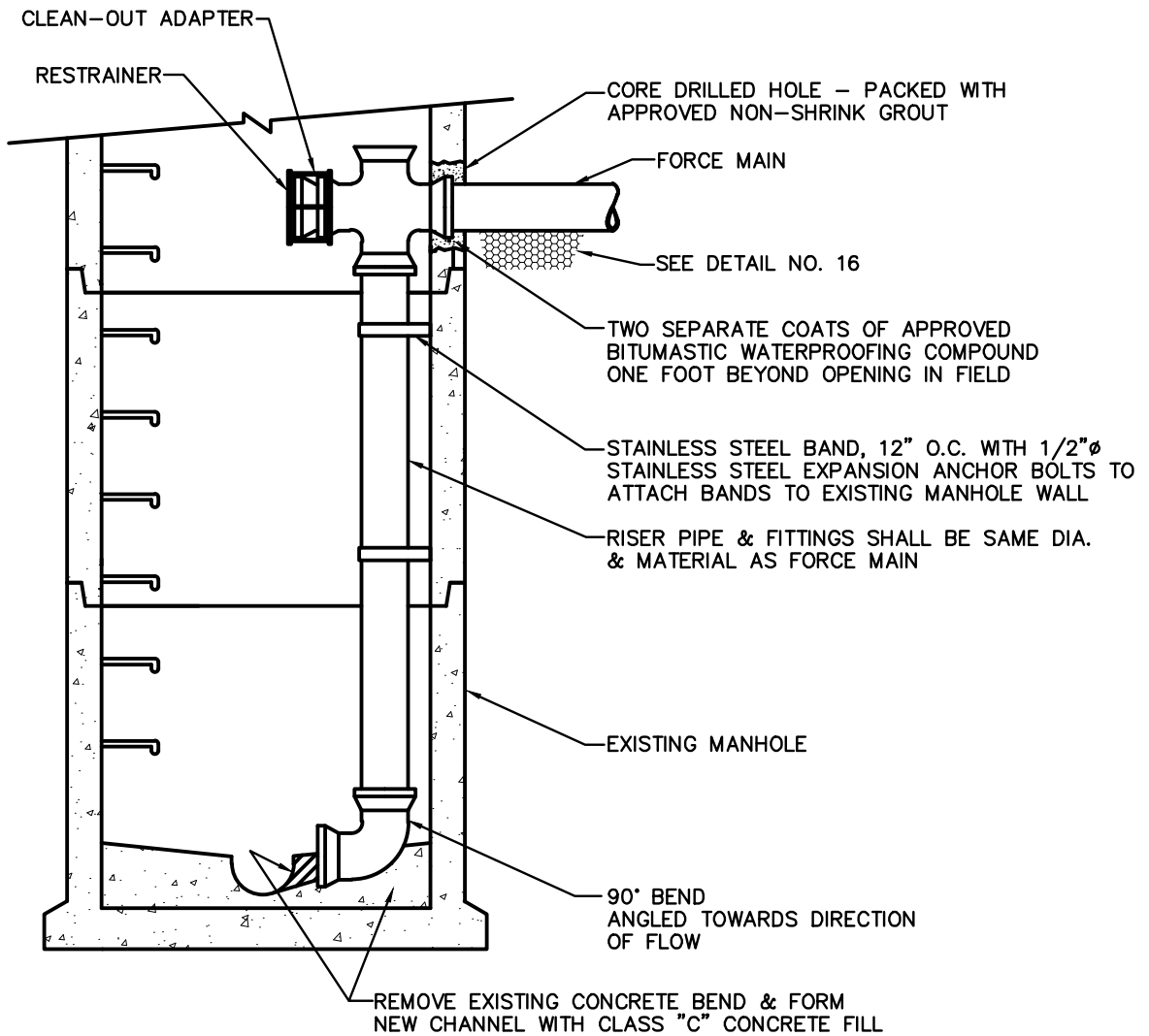


# MANTUA TOWNSHIP MUNICIPAL UTILITIES AUTHORITY



NOTE: PROVIDE A PIPE JOINT WITHIN FOUR (4) FEET OF EXISTING MANHOLE TO ALLOW FOR SETTLEMENT.

CONTRACTOR SHALL BE RESPONSIBLE FOR ANY DAMAGES TO THE EXIST. MANHOLE AND ADJACENT PROPERTIES.

## FORCE MAIN - INSIDE DROP CONNECTION DETAIL

N.T.S.