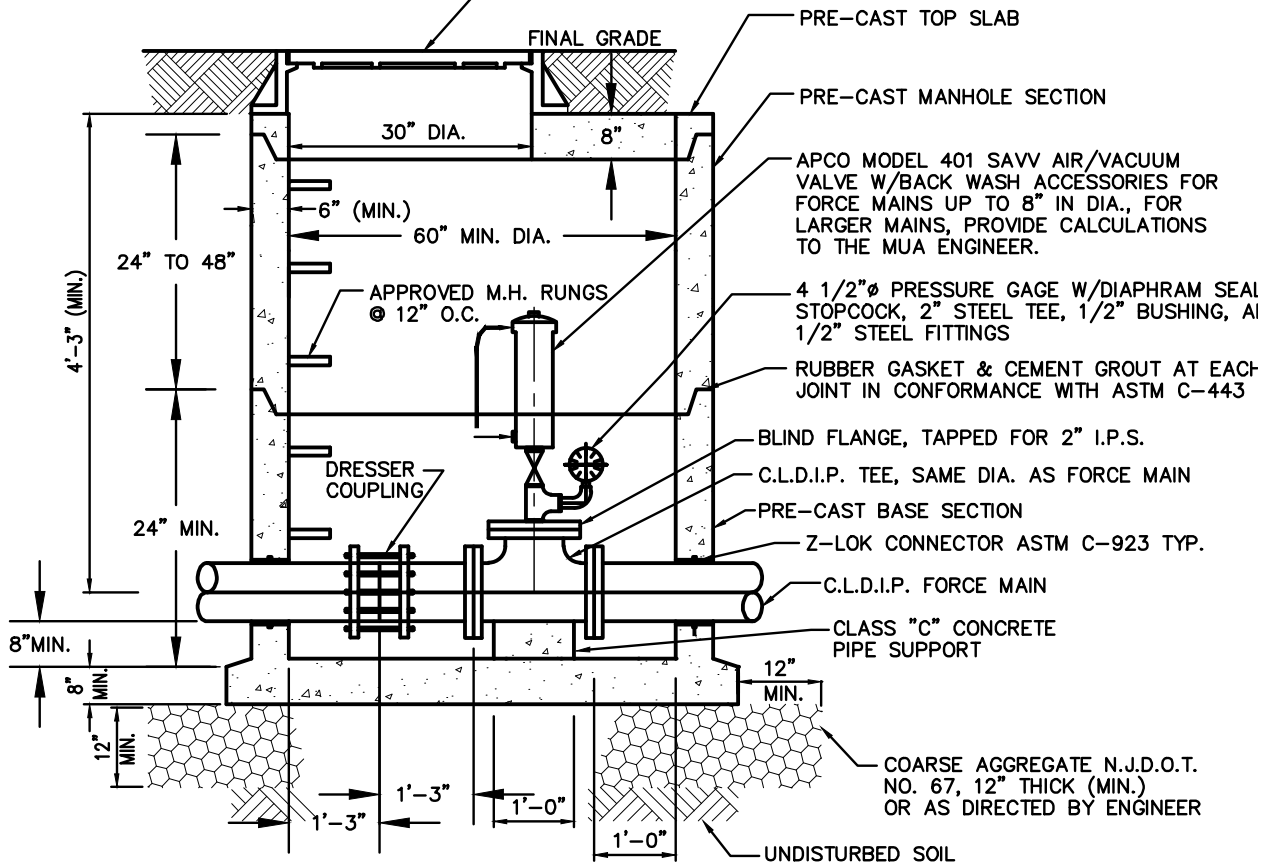


MANTUA TOWNSHIP MUNICIPAL UTILITIES AUTHORITY

LOCKING MANHOLE FRAME & COVER, SEE
DETAIL 12 AND 13. (FINAL GRADE SHALL BE
SLOPED AWAY FROM TOP OF MANHOLE.)



- NOTES:
- 1) SEE DRAWING NO. 37 FOR PLAN VIEW.
 - 2) PRE-CAST MANHOLE TO BE CONSTRUCTED AND REINFORCED IN ACCORDANCE WITH ASTM SPECIFICATION C-478-90b.
 - 3) TWO SEPARATE COATS OF APPROVED BITUMASTIC WATERPROOFING COMPOUND SHALL BE APPLIED PER MANUFACTURER'S INSTRUCTIONS TO THE ENTIRE EXTERIOR OF THE STRUCTURE.
 - 4) TWO SEPARATE COATS OF APPROVED TWO-PART EPOXY COATING SHALL BE APPLIED PER MANUFACTURER'S INSTRUCTIONS TO THE ENTIRE INTERIOR OF STRUCTURE.

AIR RELEASE/VACUUM MANHOLE DETAIL – SECTION

N.T.S.